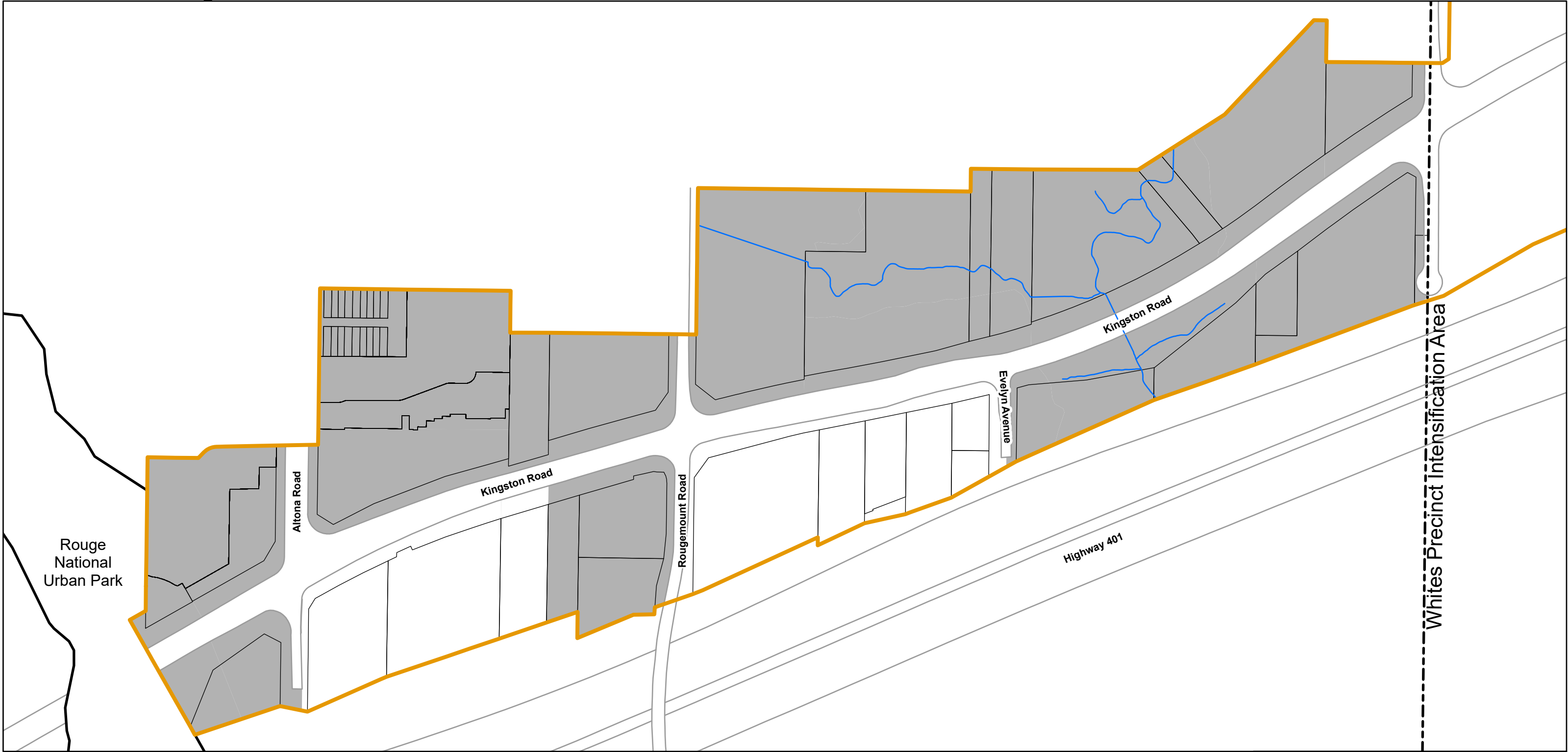
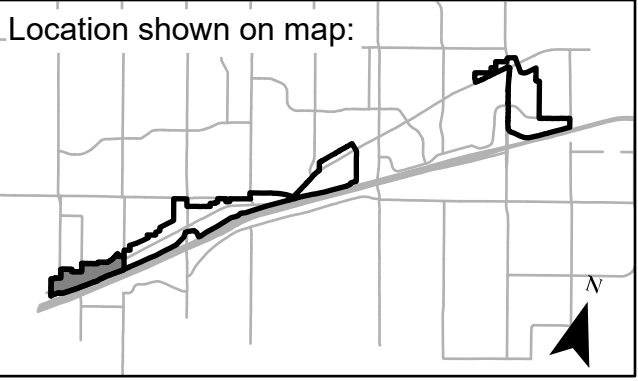


Properties subject to OPA 38, as approved by OLT-22-004770 Decision  
Sheet 1 of 4 - Rougemount Precinct Intensification Area

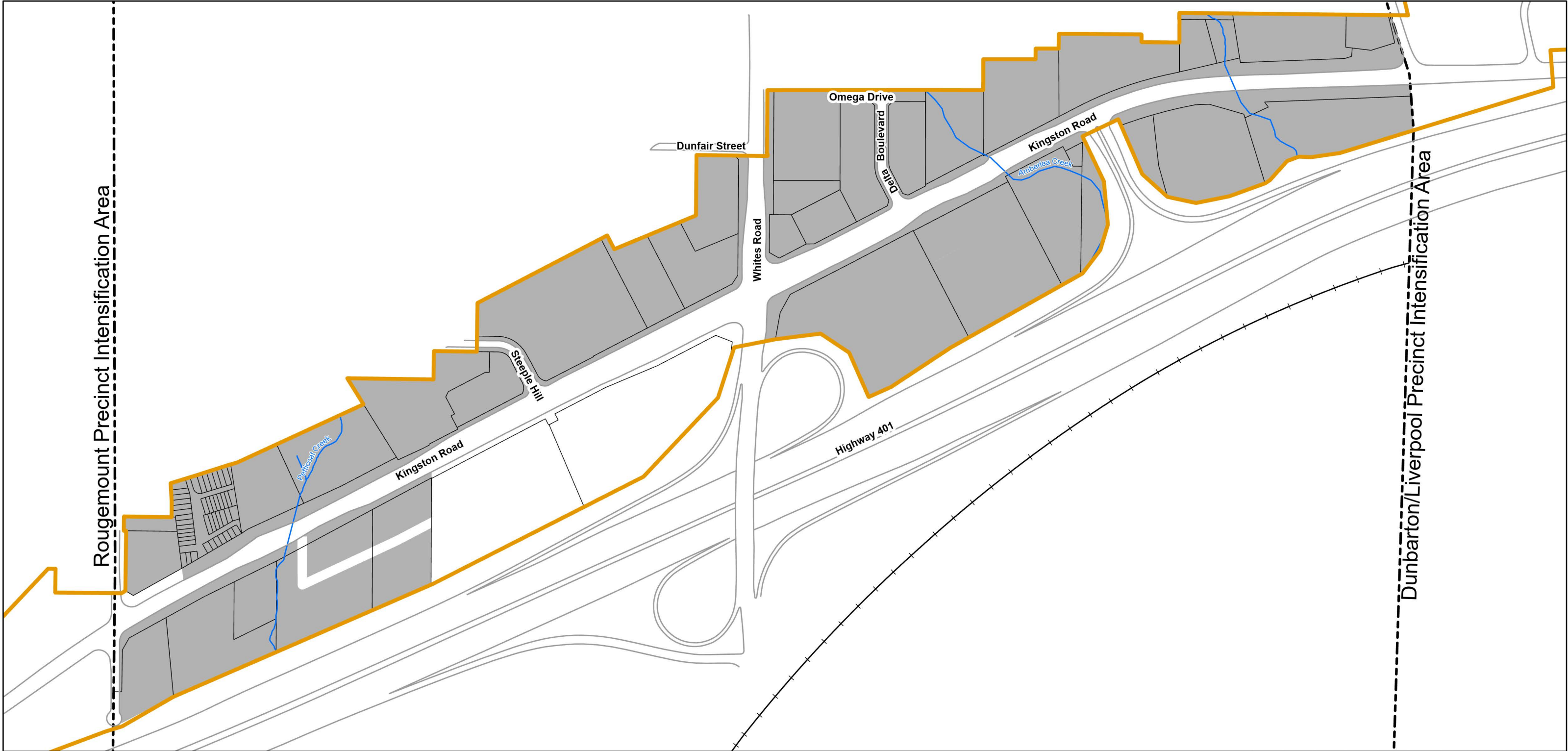


Legend

- Boundary of the Kingston Road Corridor and Brock Mixed Node Intensification Area
- Properties subject to OPA 38, as approved by OLT-22-004770 Decision

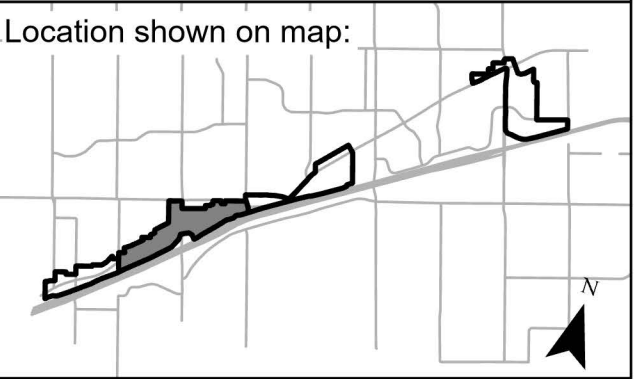


Properties subject to OPA 38, as approved by OLT-22-004770 Decision  
Sheet 2 of 4 - Whites Precinct Intensification Area

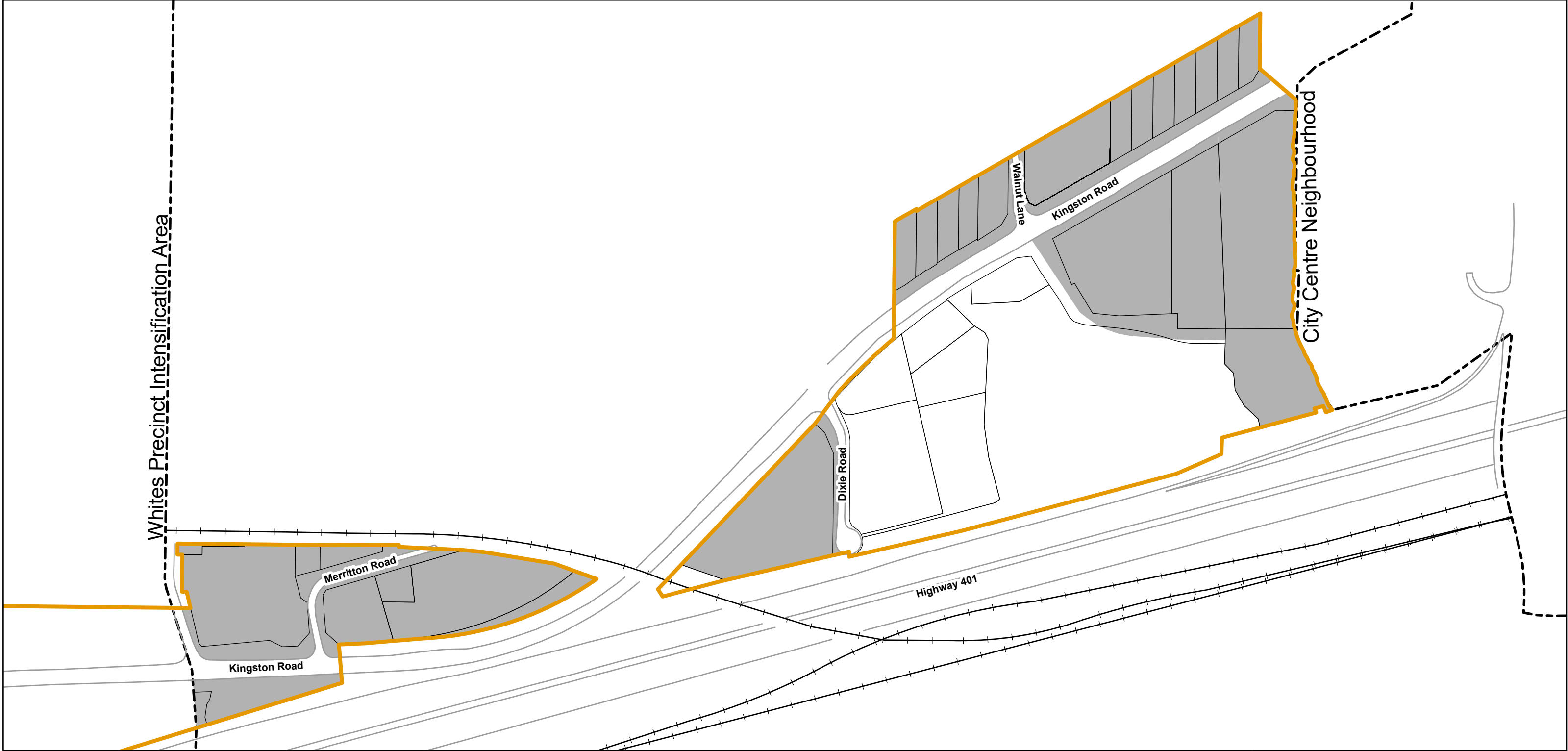


Legend

-  Boundary of the Kingston Road Corridor and Brock Mixed Node Intensification Area
-  Properties subject to OPA 38, as approved by OLT-22-004770 Decision

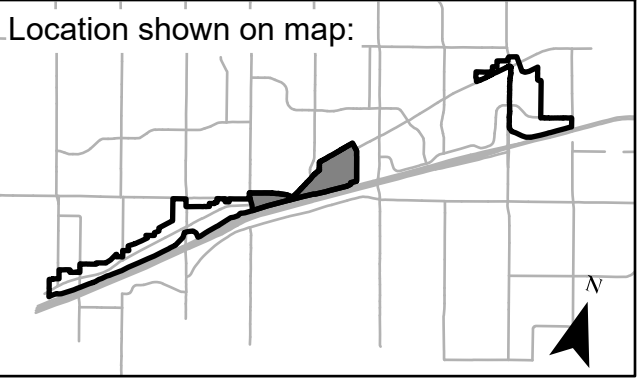


Properties subject to OPA 38, as approved by OLT-22-004770 Decision  
Sheet 3 of 4 - Dunbarton/Liverpool Precinct Intensification Area

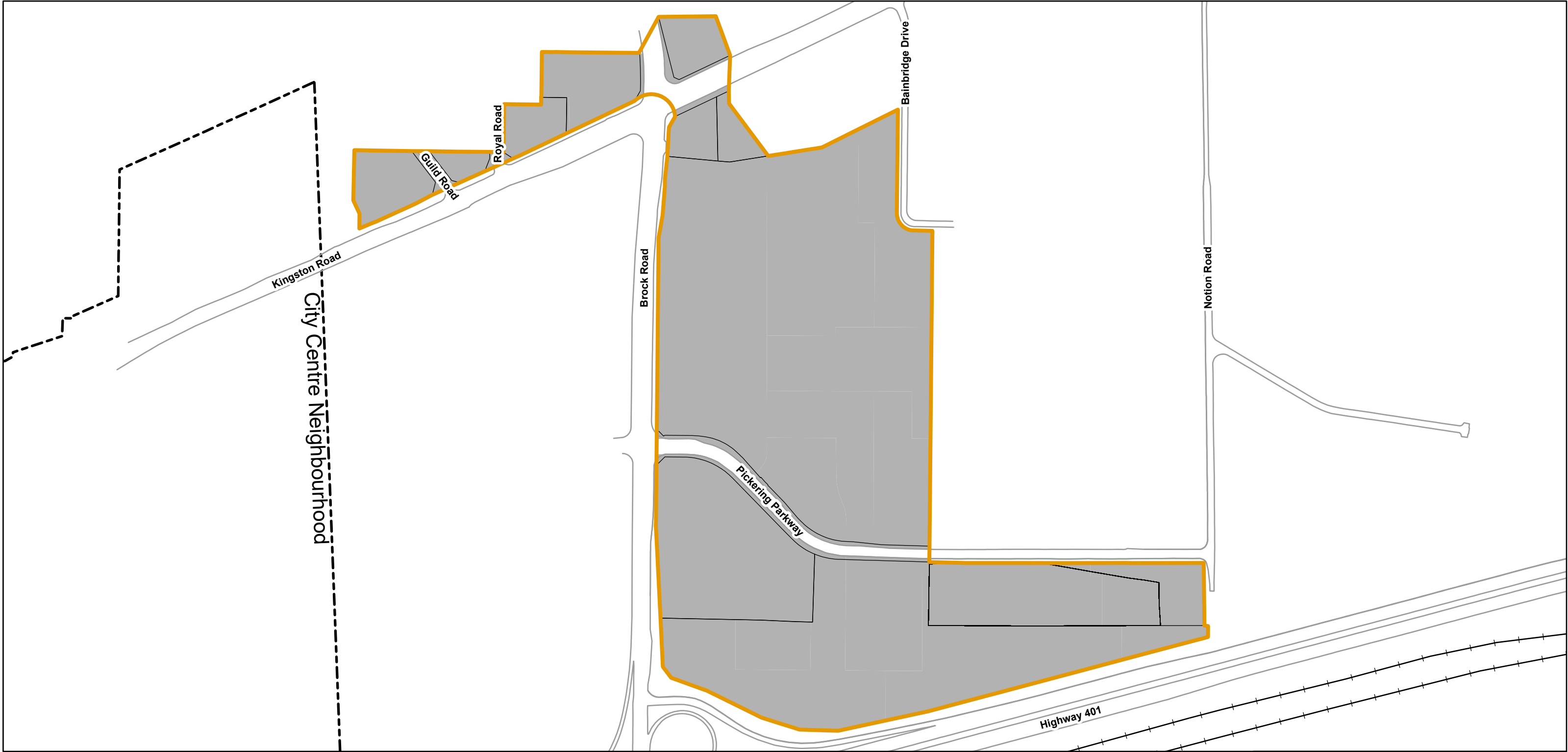


Legend



-  Boundary of the Kingston Road Corridor and Brock Mixed Node Intensification Area
-  Properties subject to OPA 38, as approved by OLT-22-004770 Decision



Properties subject to OPA 38, as approved by OLT-22-004770 Decision  
Sheet 4 of 4 - Brock Precinct Intensification Area



Legend

-  Boundary of the Kingston Road Corridor and Brock Mixed Node Intensification Area
-  Properties subject to OPA 38, as approved by OLT-22-004770 Decision

